



415 Pembroke Circle, Alpharetta, GA 30004

Installation Guidelines

Packaging – check your product for all parts



Installation. (10010C, 10011, 10022, 10024) all others skip to step three)

Step one - Thread quick connect to supply line (longest supply line) do not cross thread, attach hose. (10010C, 10011, 10022, 10024)

Cross threading will cause leaking plumbers dope may be used



Step two – Pull on line to test engagement (10010C, 10011, 10022, 10024) Disconnect to install faucet.



Step three – Attach Hot (red) and Cold (blue) supply lines hand thread the supply line and gently tightened with a wrench.



Step four – Place Deck Gasket onto sink



Step five – Feed of the (hot and cold) lines through the (faucet hole 1 3/8 inch in diameter)

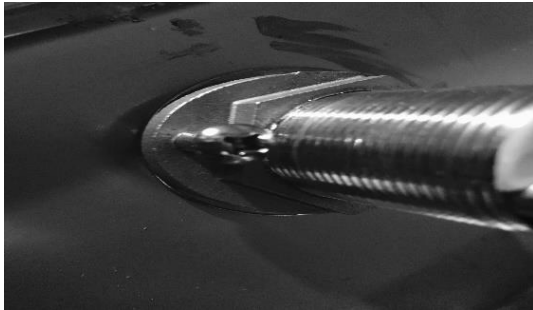
Note: Remove lock down nut prior to threading hoses.



Step six – Feed Water Lines Though Lock Down Nut (L) and Hand tighten to counter.



Step seven – Using Philips Head Screw Driver, tighten screws located on Lock Down Nut



Step eight – Hand thread water lines to supply and gently tighten with wrench (Teflon tape may be used)



Step Nine – Reconnect the water line to the quick connect for the spray wand



Step ten – Attach Weight (l) on hose for spray wand at the lowest point on the supply line. (10010C, 10011, 10022, 10024)



TURN ON SUPPLY LINES AND TEST YOUR CONNECTIONS FOR LEAKS.....

Enjoy your new faucet!

